



# HOVERMATT®

*Lateral Transfers • Boosting • Turning • Positioning • Proning*

# FACILITATE ALL-DAY PATIENT CARE WITH THE HOVERMATT® AIR TRANSFER SYSTEM.

Designed to be multifunctional, the HoverMatt® Air Transfer System makes patient transfers, boosting, positioning and proning easier, while protecting caregiver safety. A cushion of air beneath the inflated HoverMatt reduces the force required to move a patient by 80-90%, enabling caregivers to safely transfer patients without lifting or straining. By reducing injuries related to lateral transfers and repositioning, the HoverMatt helps to improve staff retention while meeting legislative guidelines for safe patient handling.

## Improves Patient Comfort & Safety

- Inflated mattress cradles the patient while moving them in a stable position, eliminating skin shear and bruising and providing comfort for patients in pain
- Soft nylon twill fabric can be left comfortably under the patient for maximum use

## Reduces Cost

- Air-assisted technology is proven to reduce workplace injuries and associated costs by 50-100% when implemented into a Safe Patient Handling Program
- Reusable HoverMatts have a life span of at least 5 years when properly used and maintained

## Facilitates Care Throughout the Facility

- With a 1200 lb. weight limit, one device can be used for multiple patient handling tasks across the facility, including in Radiology, Diagnostic Imaging and ancillary departments
- Double-coated models offer fluid and stain resistance, making them ideal for the OR and Labor & Delivery
- Supports Safe Patient Handling recommendations and guidelines for increased healthcare worker safety from OSHA, AORN, NAON and ANA

## Minimizes Infection Control Risk

- Heat-sealed design eliminates needle holes to keep microorganisms out and prevent cross contamination
- Treated with antimicrobial properties for enhanced infection control

*HT-Air® 1200 Air Supply offers six airflow options, including a setting that can be used to inflate the HoverMatt slowly for sensitive patients and ensure proper positioning prior to full inflation.*



# HOVERMATT®





### *Ortho, L&D and UroGyn*

Specifically designed for use in the OR and Labor and Delivery, the HoverMatt® Half-Matt delivers the same safe and easy patient transfers as the standard HoverMatt but in a shorter length. At 45" long, the Half-Matt ends right below the buttocks to accommodate specialty tables. It is ideal for use during arthroscopy, cystoscopy, labor and delivery, and other gynecological or urological procedures as an effective yet unobtrusive patient transfer device.

## HOVERMATT®

Half-Matt



### *Bariatrics and UroGyn*

The HoverMatt® Split-Leg Matt is a specialty transfer mattress designed for use in the lithotomy position or on surgical tables when split-leg attachments are used. The Split-Leg Matt has a patented design that separates the bottom half of the transfer mattress into two individual segments, or "legs." These legs snap together for effortless lateral patient transfers and are then unsnapped for convenient positioning on the procedure table.



## HOVERMATT®

Split-Leg

# HOVERTECH ADVANTAGES

- Innovative market leader focused on customer needs
- Extensive air-assisted lateral transfer device product line
- Comprehensive compatibility safety testing
  - Pressure Mapping
  - Radiolucency
  - Electrosurgery Compatibility
  - Static Testing
  - MRI Compatibility
  - Attenuation
  - Heat Transfer
  - Flammability
- Equipment acquisition programs including the HT-Air Placement Program, HT-Air Rental Program, and HoverTech Rewards Program
- Professionally trained, account-dedicated sales and customer service representatives
- Safe Patient Handling Healthcare Ergonomics Lifting Program (HELP<sup>SM</sup>) provides consultative services to assist facilities to develop or improve a SPHM program

## The HoverMatt® Air Transfer System and HoverJack® Air Patient Lift Provide a No-Lift Solution for Patient Falls.

In the event of a patient fall, the HoverJack® Air Patient Lift and HoverMatt® Air Transfer Mattress can be used together for safe and easy air-assisted patient lifts and lateral transfers. Using the same air supply, the HoverMatt and HoverJack work as a system to assist caregivers: the HoverMatt is inflated to laterally transfer the patient onto the deflated HoverJack; the HoverJack chambers are inflated to lift the patient from the floor; and finally, the HoverMatt is inflated to transfer the patient to the bed or stretcher. The HoverMatt and HoverJack offer a unique and versatile solution that can be used wherever a fall occurs, including small, confined areas, while providing the patient with a safe, comfortable, and dignified experience.



# WOUND CARE MANAGEMENT

---

Wound care and prevention are critical for the vast majority of patients in acute care, long term care and home care settings. The prevalence of pressure ulcers is a major concern, as they can lead to additional healthcare costs and a decline in a patient's health. Reducing pressure and minimizing friction and shear are significant factors for wound care management.

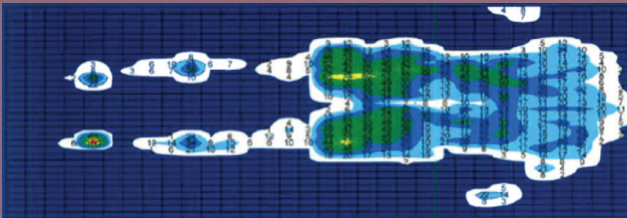
The HoverMatt can be left under patients to assist with transfers and repositioning, while mitigating these wound care risk factors. Because it makes turning and repositioning easier for caregivers, use of the HoverMatt can also help to improve adherence to Q2 turning protocols.

## Friction and Shear

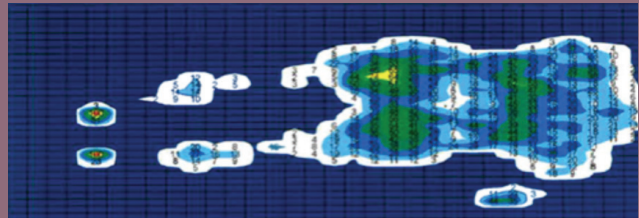
When the HoverMatt is inflated, the patient is moved on a stable cushion of air, eliminating friction and shear caused by the opposing pull forces of the tissue and bone.

## Pressure Mapping

There is <1% difference in interface pressures between the low air loss baseline measurement and the HoverMatt. These pressure mapping results conclude that there is no increase in risk of pressure ulcers with the use of the HoverMatt, allowing clinicians to safely leave it under the patient for all-day care.



*Baseline Measurement: Low air loss mattress, sheet, pressure mapping device, 200 lb. patient*



*Low air loss mattress, sheet, pressure mapping device, deflated heat-sealed HoverMatt, 200 lb. patient*

# PRODUCT SPECIFICATIONS

---

## HoverMatt Air Transfer System

### *Heat-Sealed Construction*

Material: Nylon twill  
Seams: RF Welding on all seams  
Latex free

#### AVAILABLE SIZES

28" W x 78" L – HM28HS  
34" W x 78" L – HM34HS  
39" W x 78" L – HM39HS  
50" W x 78" L – HM50HS  
Patent No. 6,073,291

### *Double-Coated Construction*

Material: Nylon twill with silica polyurethane coating on patient side  
Seams: RF welding on all seams  
Latex free

#### AVAILABLE SIZES

28" W x 78" L – HM28DC  
34" W x 78" L – HM34DC  
39" W x 78" L – HM39DC  
50" W x 78" L – HM50DC  
Patent No. 6,073,291

## HoverMatt Half-Matt

### *Heat-Sealed Construction*

34" W x 45" L – HM-Mini34HS  
Patent No. 6,073,291

### *Double-Coated Construction*

34" W x 45" L – HM-Mini34DC  
Patent No. 6,073,291

## HoverMatt Split-Leg Matt

### *Double-Coated Construction*

34" W x 78" L – HMSL34DC  
Patent No(s). 6,073,291; 7,266,852; 7,406,723; 7,574,761

## Weight Limit

1200 pounds

## Compatible with HoverTech Air Supplies

Air200G (800W), Air400G (1100W), and HTAIR1200/2300 (Variable Speed)



4482 Innovation Way  
Allentown, PA 18109

800.471.2776  
Fax 610.694.9601

[www.HoverMatt.com](http://www.HoverMatt.com)  
[Info@HoverMatt.com](mailto:Info@HoverMatt.com)

BRO\_HM\_0816